



FACA-801

Fully Automatic Chemistry Analyzer



Labomed introduces an automatic biochemistry analyzer with varying testing capacities. FACA-801 conducts 800 tests/hr with True Random Access.

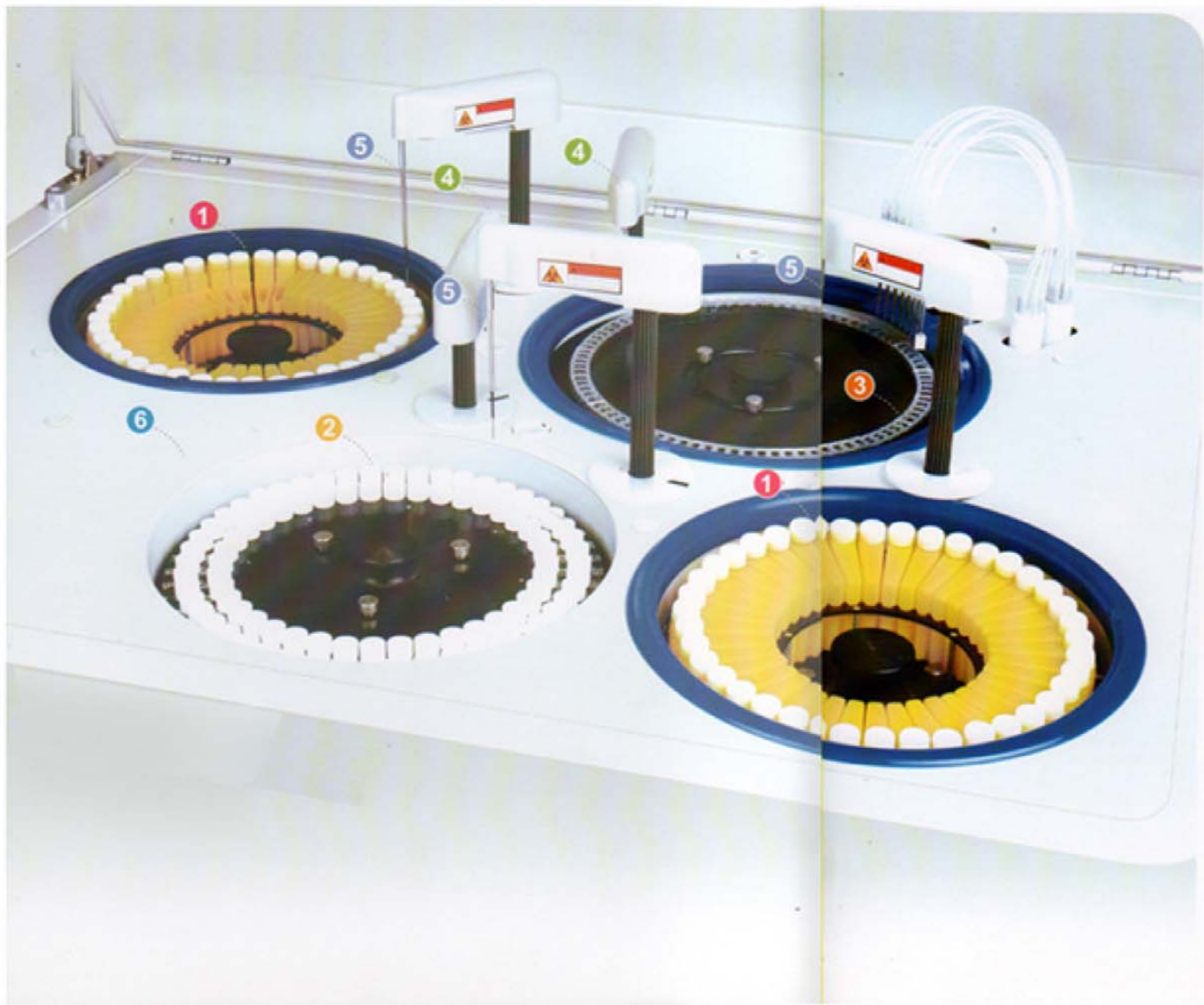
Features

- *Random Access and Direct Reading System.*
- *Automatic Washing System for Both Sample and Reagent Probe.*
- *Liquid Level Detection and Collision Protection for Both Sample and Reagent Probe.*
- *Reliable Cooling System for Reagent Chamber.*
- *Works with Windows XP and Windows 7*
- *Powerful Reaction Cuvette Washing System.*
- *User-Friendly Interface.*
- *ISE module and barcode scanner (optional)*
- *Enzyme Kinetic GPT and GOT testing*

Labomed, Inc. is certified by ISO 9001-2013, has CE Conformity and is FDA Licensed

Accessories

- *15 Reagent bottle 2 with holder*
- *80 Reaction cuvettes*
- *1000 Serum cups*
- *1 Tube*
- *4/4 Fuse (4A/8A)*
- *1 Lamp (13.8V/50W)*
- *2 Power Cables*
- *1 Com Cable*
- *1 Piston (1 ml)*
- *1 Bottle*
- *1 User Manual*
- *1 Operation Software CD*
- *1 Tool*
- *1 Sensor*
- *2 Detect Probes*
- *1 Sample Probe*
- *1 Black Cup*
- *1 Sinkage Block*
- *CABINET IS OPTIONAL*



1 Reagent Tray

40 reagent positions for FACA-301 and FACA-261
 80 reagent positions for FACA-401
 Cooling system may work independently for 24 hours.

2 Sample Tray

60 sample positions for FACA-301 and FACA-261
 88 sample positions for FACA-401

3 Cuvette

Either high quality UV-transmitted plastic
 cuvettes or quartz glass cuvettes available.

4 Independent Mixer

1 mixer for FACA-301 and FACA-261
 2 mixers for FACA-401

5 Sample probe/ Reagent probe

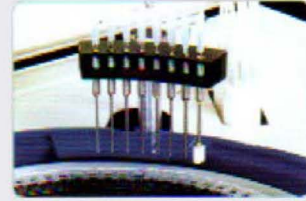
1 sample probe and 1 reagent probe for FACA-301
 1 sample probe and 2 reagent probes for FACA-401
 Only 1 sample / reagent probe for FACA-261

6 ELE Module

ELE module available on request.

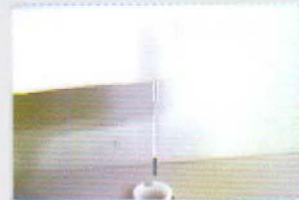
Cuvette Washing Station

8 channels automatic washing station.



Independent Mixer

Independent mixer ensuring quick and complete reaction.



Reaction Cuvette

High quality UV-transmitted plastic cuvettes, or quartz glass cuvette (optional).



Sample Probe / Reagent Probe

With liquid level sensor, anti-collision sensor and automatic cleaning function.



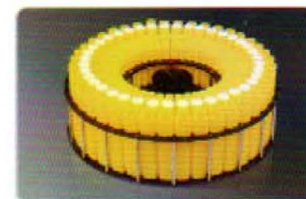
Reagent Bottle

More convenient and economical ready to use reagent kits.



Reagent Tray

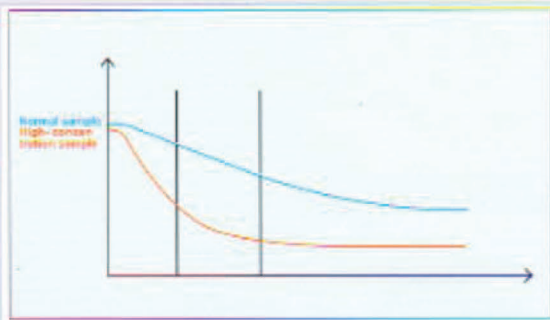
With cooling reagent chamber.



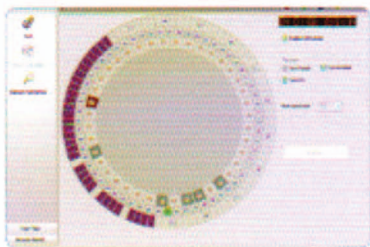
Software



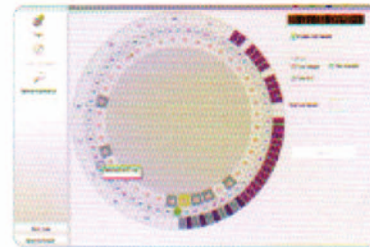
User-Friendly Interface
Compatible with Windows XP, Vista or Windows 7



Variable reading function

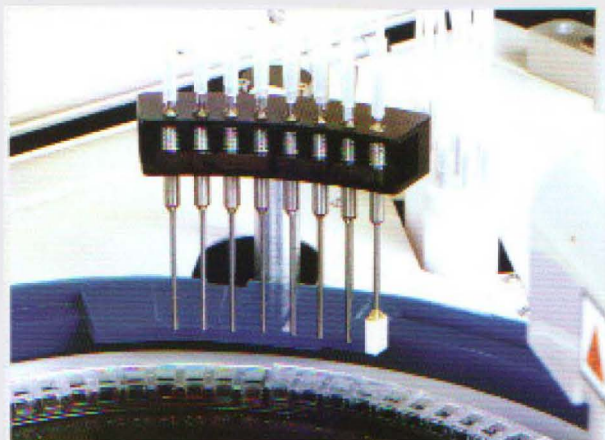


Carry Over Control Function



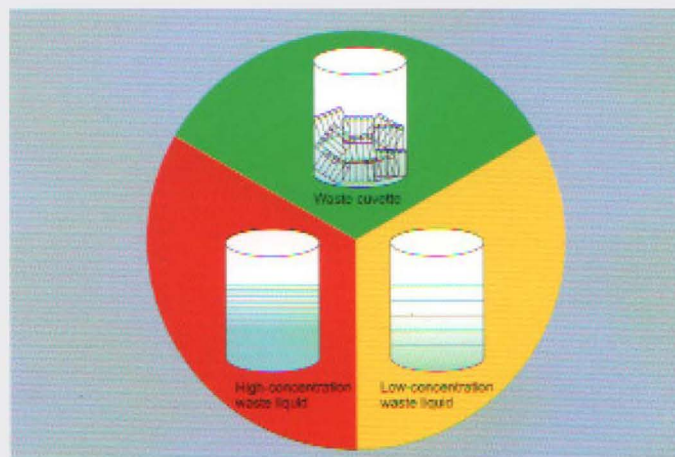
Automatic Alarm for Malfunctions

Automatic Washing Station



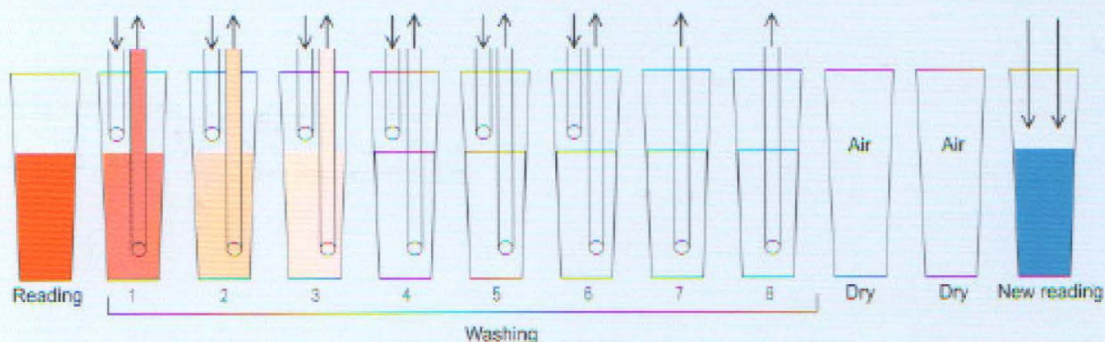
An 8-channel washing station ensures complete washing for cuvettes.

Environmental Protection Design



The waste is automatically classified and collected into different containers.

Automatic cuvette washing and blanking makes more precise results



| Wavelength | Reading | Wash1 | Wash2 | Wash3 | Wash4 | Wash5 | Wash6 | Wash7 | Wash8 | Dry | Dry | New reading |
|------------|---------|--------|--------|--------|--------|--------|--------|--------|--------|--------|--------|-------------|
| 340nm | 1.3100 | 0.025 | 0.0092 | 0.0037 | 0.0022 | 0.0008 | 0.0006 | 0.0005 | 0.0002 | 0.0800 | 0.0850 | / |
| 405nm | 0.6920 | 0.0112 | 0.0075 | 0.0033 | 0.0019 | 0.0010 | 0.0005 | 0.0003 | 0.0002 | 0.0800 | 0.0805 | / |
| 450nm | 0.5281 | 0.0108 | 0.0066 | 0.0031 | 0.0015 | 0.0009 | 0.0003 | 0.0003 | 0.0002 | 0.0806 | 0.0805 | / |
| 510nm | 0.7005 | 0.0113 | 0.0055 | 0.0027 | 0.0012 | 0.0006 | 0.0002 | 0.0002 | 0.0001 | 0.0810 | 0.0811 | / |
| 546nm | 0.5368 | 0.0184 | 0.0072 | 0.0043 | 0.0013 | 0.0008 | 0.0002 | 0.0002 | 0.0002 | 0.0840 | 0.0843 | 0.5090 |
| 578nm | 0.0136 | 0.0135 | 0.0064 | 0.0031 | 0.0012 | 0.0006 | 0.0002 | 0.0002 | 0.0002 | 0.0800 | 0.0800 | / |
| 620nm | 0.0189 | 0.0189 | 0.0054 | 0.0026 | 0.0010 | 0.0005 | 0.0002 | 0.0002 | 0.0002 | 0.0800 | 0.0800 | / |

Test O.D. value-Real reagent blank=True O.D.value

FACA-801 Automatic Biochemistry Analyzer

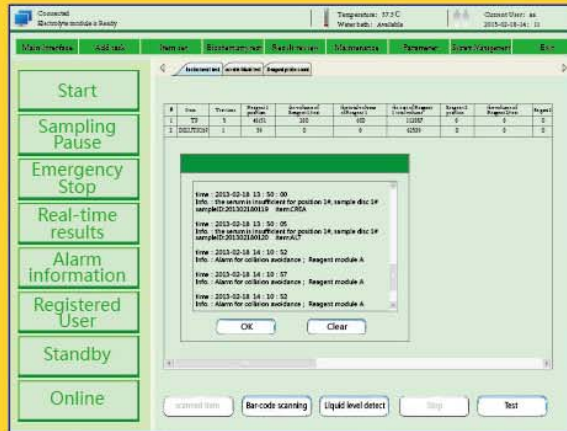
More powerful software meets all need.



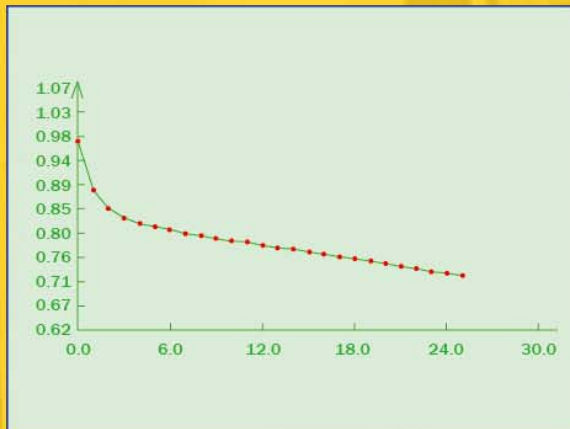
- High throughput random access...
- 800 Tests/hour
- New style software, more friendly, efficient and convenient.
- Water-bath incubation technology ensures accurate reaction temperature.
- Frequency conversion technology makes movement more stable, reliable and lower noise.
- Perfect self-test and position auto-locating function minimize mechanical error.
- Auto stand-by function for saving energy consuming and 24 hours ready for work.
- Perfect Instrument-Reagent-Control/Calibrator system ensures the results with good traceability and coherence.



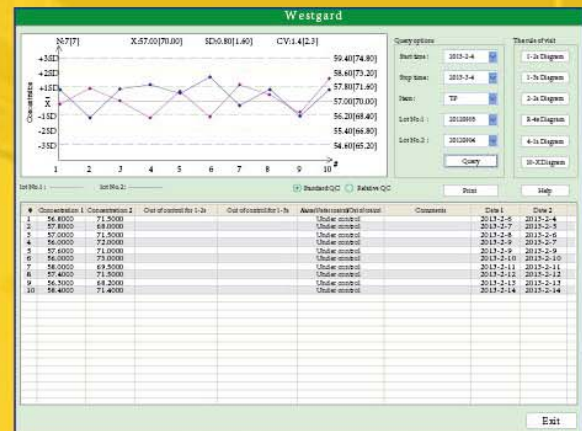
FACA-801 Automatic Biochemistry Analyzer



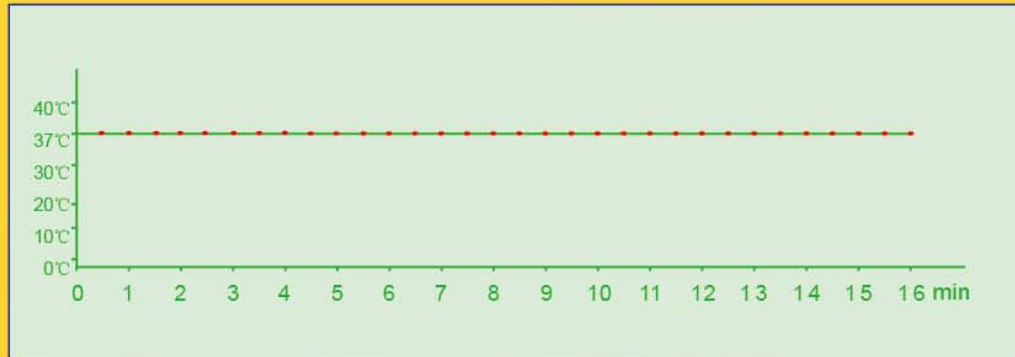
- Smart warning and easy to correct function.



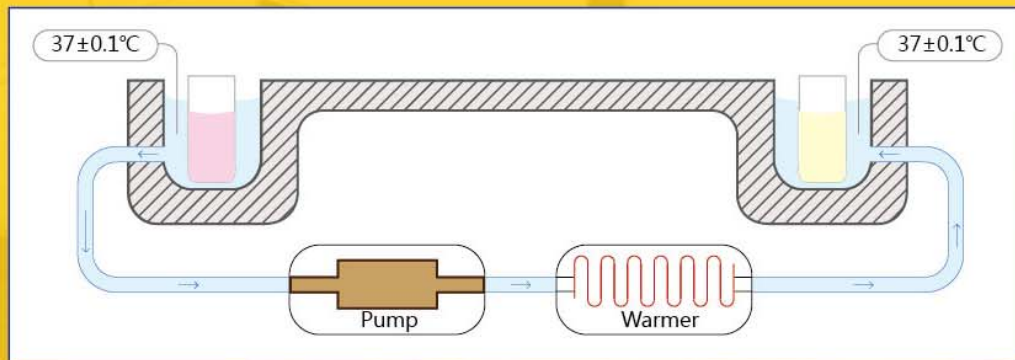
- Reaction curve displaying on line and storing helps results analysis.



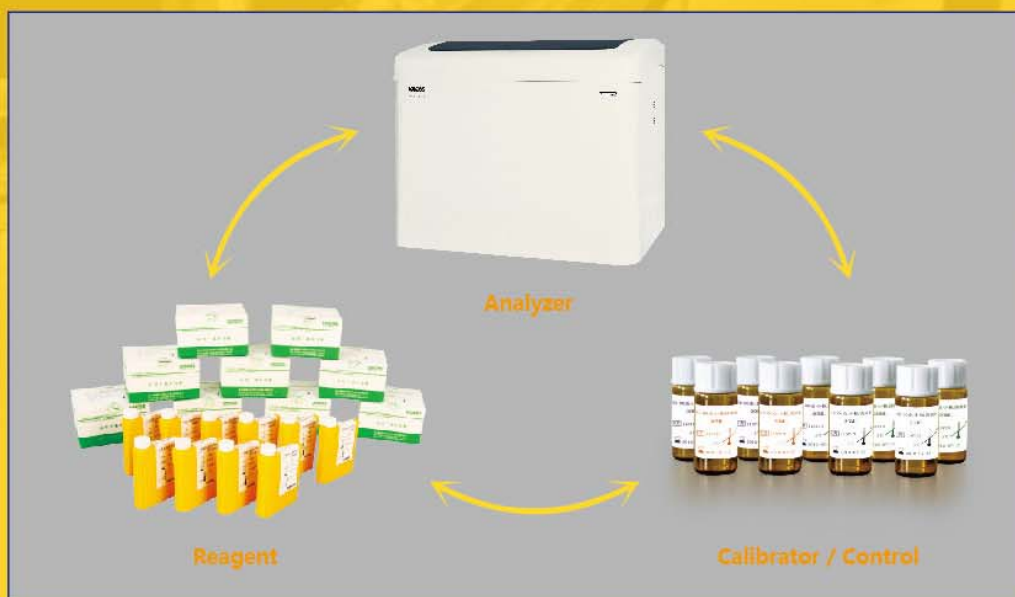
- Levy jennings quality control program at multi-level.



- Automatic high precision water-bath technology to ensure the temp. keeps at $37\pm 0.1^{\circ}\text{C}$ immediately and constantly.



- Water-bath system.

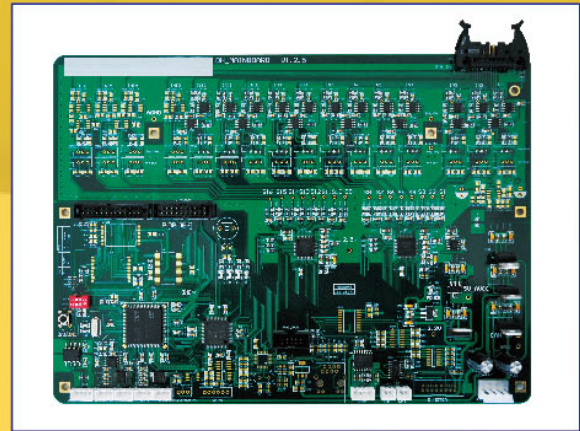


- Complete Instrument-Reagent-Control/Calibrator system guarantees traceability and reliability of all results.

FACA-801 Automatic Biochemistry Analyzer



- ISE module is optional, test various ion items at the same time with accurate results and stable performance.



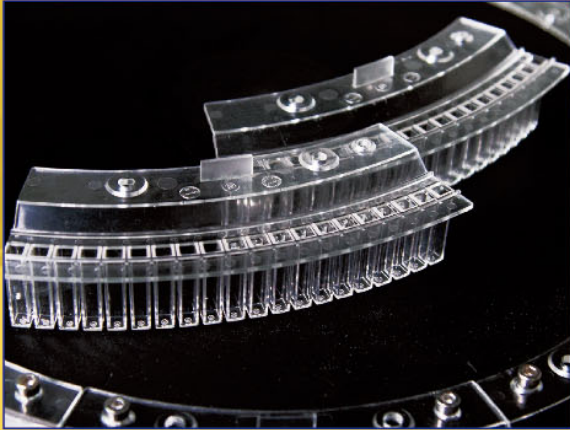
- Advanced high sensitive test technology.



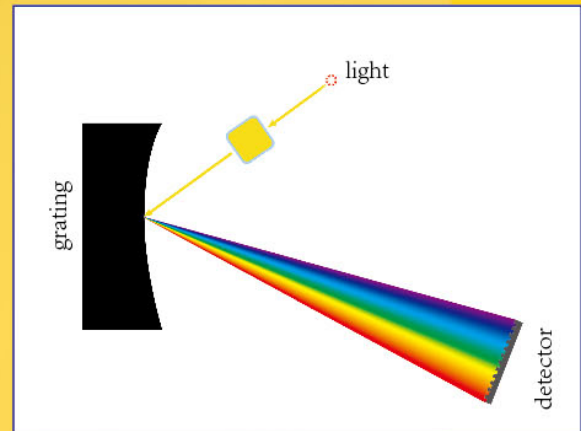
- Eight channels washing station for each cuvette cleaning, automatic record and deduct cuvette blank value. Heavy washing function available for "dirt cuvette" to ensure each cuvette perfectly clean.



- High accuracy diluter, advanced sealed and connecting technology to guarantee accurate sampling.



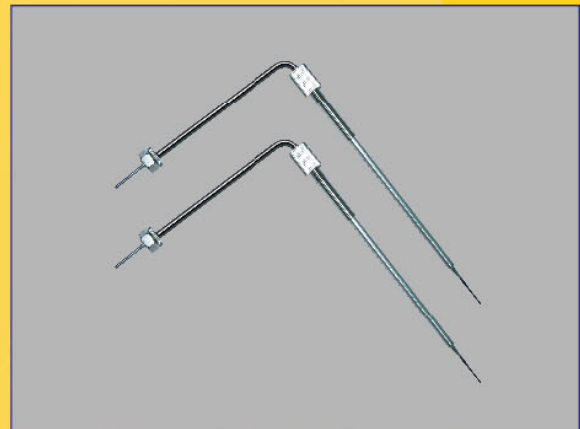
- High quality plastic cuvette (quartz glass cuvette available on request).



- High resolution concave grating system, wavelength range 340-800nm, multi-wavelength polychromatic assay at the same time.



- Two separate reagent chambers with independent refrigerator.



- Internal and external nano treated probe effectively reduce probe residual and carry over.

Technical Specifications

| | |
|------------------------------|--|
| Model | FACA-801 |
| Assay types | Random access |
| Throughput | 960 T/hr(include ISE), 800 T/Hr(biochemical test only) |
| Analytical methods | End point, Kinetic(Rate), Fixed time, Single standard, Multi-standard, Single wavelength assay, Bichromatic, Bi-reagent assay, Serum blank assay, Immunoturbidimetric assay and ISE assay (K\Na\Ca\C\PH) |
| Sample capacity | 2 x 92 primary tube or micro serum cup |
| Sample/reagent probe | With liquid level sensor, automatically checking and tracking reagent allowance ability, internal and external nano treated, stereoscopic collision protection, plugging probe checking ability |
| Sample volume | 1.0–100ul in 0.1 µl/step |
| Reagent volume | 1–500ul in 0.1 µl/step |
| Reagent tray | 2 reagent trays, barcode scanner available (on request), R3/R4 assay models available |
| Reagent refrigerator | 2–8 °C, 24 hrs available |
| Reading Cuvette | 160 cuvettes,made of ultraviolet transmittable plastic(or quartz glass cuvettes available on request) |
| Reaction volume | Minimum 120 µl |
| Reaction disc temp. | Water bath system, 37 ± 0.1°C,(air bath on request) |
| Cuvette cleaning | Automatical warm water washing station with 8 channels, blank reading for ensuring each cuvette well cleaned before using. Smart detergent clean for high contamination cuvette and probe, efficiently decreasing carry-over |
| Carry-over | Less than 0.05% |
| Monochromator | Concave grating |
| Wavelength range | 340–810nm |
| Alarm | Automatic alarm for lack of reagent, sample , water, or waste filled and other errors, showing the info on monitor |
| Mixer | 2 nano-surface treated mixing probers, with automatic warm water washing station for each one |
| Quality control | Multi-level QC for the same item automatically monitoring and alarming if the results out of control |
| Assay Linearity range | Wide linearity range measuring, also with automatically diluting function for high value sample |
| Calibration | Single or multi-points calibration, supporting linear and nonlinear assay |
| Data processing | Powerful software for calculating, blanking, multi-analysis, data reviewing, QC and results management,on line monitoring, editing etc. |
| Data storage | Long-term storage, storage capacity upon PC hard disc |
| Print | Multi report formats and user-self-defined report format are available |
| Power supply | AC 110V/60Hz or 220V/50Hz |
| Dimensions | 1200mm x 900mm x 1100mm |

US & Europe Patents Pending

LABOMED,INC

Add:2728 La Cienega Blvd. Los Angeles, CA 90034 USA

Tel: (310) 202-0811

Fax: (310) 202-7286