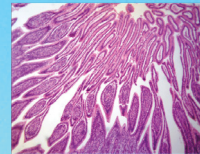




LABOMED, INC.



LB-220 Binocular Biological Microscope with Finite Optical System, Achromatic Objective, Quadruple Nosepiece, and LED Illumination

LB-220 Binocular Biological Microscope is economic, practical and easy to operate.

LB-220 Binocular Biological Microscope adopts LED illumination, which saves energy and have long working life, it is also very comfortable for observation.

LB-220 Binocular Biological Microscope is widely used in educational, academic, agricultural and study field. Rechargeable battery is optional for outdoors operation or places that power supply is not stable.



LABOMED, INC.

APPLICATION

LB-220 Binocular Biological Microscope is ideally suited for school biological education and medical analyses area to observe all kinds of slides. They can be widely used in schools, clinics, hospitals, academic labs and scientific research department.

FEATURES

1. New machining facility and advanced alignment technology.
2. Comfortable operation with ergonomic design.
3. LED light illumination, save energy and long working life.
4. Compact and flexible, ideally suited for desktop, laboratory worktable.



SPECIFICATION

| | |
|----------------|---|
| Model | LB-220 |
| Optical System | Finite Optical System |
| Viewing Head | Seidentopf Binocular Head, Inclined at 30°, 360° Rotatable, Interpupillary Distance 48-75mm |
| Eyepiece | WF10×/18mm |
| Objective | Achromatic Objective 4×, 10×, 40×(S), 100×(Oil)(S) |
| Nosepiece | Quadruple Nosepiece |
| Stage | Double Layer Mechanical Stage 125×115mm/ 75×35mm |
| Focusing | Coaxial Coarse & Fine Adjustment, Fine Division 0.002mm, Moving Range 22mm |
| Condenser | Abbe NA 1.25 with Iris Diaphragm |
| Illumination | 3W LED illumination, Brightness Adjustable |
| Package | 1pc/carton, 34cm*25cm*42cm, 6.5kgs, NW: 5kgs |



LABOMED, INC.

SAMPLE IMAGES

