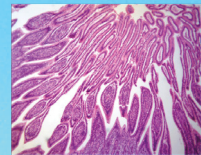




LABOMED, INC.



LB-237 Binocular Digital Biological Microscope, Camera and Software (5.0MP)

LB-237 Binocular Digital Biological Microscope, Camera and Software (5.0MP) are classical, the microscopes feature ingenious stand, sharp image, comfortable operation and high-resolution camera, which make your work much enjoyable.

APPLICATION

LB-237 Binocular Digital Biological Microscope, Camera and Software (5.0MP) are widely used in in hospitals, clinics, medical academies, morphology and related research centers for biological, pathological, bacterial, histological, immune, pharmacological and genetic applications.



LABOMED, INC.

FEATURES

1. With built-in 5.0 MP camera.
2. Sharpe Image with Semi-plan Achromatic Objectives.
3. Easy to replace lamp.
4. Professional and powerful micro-image process and analysis software.

SPECIFICATION

LB-237	Specification
Digital System	5.0MP CMOS digital camera with high-resolution, 2592×1944, USB2.0 output
Viewing Head	Seidentopf type Binocular Head at 30°, Interpupillary Distance 48-75mm
Eyepiece	Extra Wide Field EW10/20mm
Nosepiece	Backward Quadruple Nosepiece
Objective	Semi-plan Achromatic Objective 4×, 10×, 40×, 100×
Condenser	NA1.25 Abbe Condenser with iris diaphragm and filter, rack & pinion adjustment
Stage	Double Layers Mechanical Stage 140×140mm/ 75×50mm
Illumination	1W S-LED Illumination, Brightness Adjustable



LABOMED, INC.

Filter	Blue and Green Filter
Software	ScopeImage 9.0

SAMPLE IMAGES

