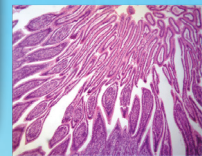
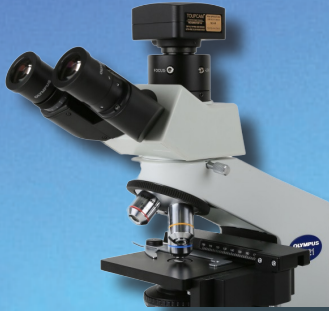




LABOMED, INC.



LC-5 1080P C-mount WiFi CMOS Camera

LC-5 1080P C-mount WiFi CMOS Camera is a WiFi camera and it adopts ultra-high performance CMOS sensor as the image capture device. WiFi is used as the data transfer interface.

When a **LC-5 1080P C-mount WiFi CMOS Camera** is attached to the eyepiece or trinocular head of a microscope and started, it will generate a WiFi signal for sending high-resolution images from a microscope to WiFi-enabled devices such as smartphones, tablets, and computers with iOS, Android, OS X, Linux and Windows operating systems, streaming images to up to six devices simultaneously.

LC-5 1080P C-mount WiFi CMOS Camera includes ImageView image software for quantifying, measuring and annotating images and for using with an interactive white board. It also works with the free, downloadable ImageView app for viewing, capturing, and editing images.



LABOMED, INC.

FEATURES

- C-Mount camera has 25.4 mm or 1 inch diameter with 32 threads per inch;
- Scientific research grade camera with Aptina CMOS sensor;
- Sends H.264 encodec high-resolution images from a microscope to WiFi-enabled smartphones, computers and tablets with iOS, Android and Windows operating systems;
- Streams images to several devices simultaneously;
- Integrated zinc aluminum alloy housing;
- Ultra-Fine™ color engine with perfect color reproduction capability;
- With advanced video & image processing application ImageView (only support simple video viewing capturing for IOS/ android system);
- Custom programmable with SDK provided(Windows/Linux/OS).



SPECIFICATION

Model	LC-5
Sensor Size(mm)	1080P/IMX222 (C) 1/2.8" (5.38x3.02)
Pixel(μm)	2.8x2.8
G Responsivity	510mV with 1/30s
Dynamic range	0.15mv with 1/30s
SNRmax	
FPS/Resolution	25@1920x1080
Binning	1x1
Exposure(ms)	0.059ms~1941ms
Spectral Range	380-650nm (with IR-cut Filter)
White Balance	Whole Area White Balance/ Manual Temp Tint Adjustment/NA for Monochromatic Sensor

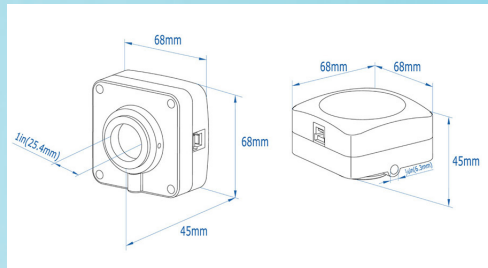


LABOMED, INC.

Color Technique	Ultra-Fine™ Color Engine/NA for Monochromatic Sensor
Capture/Control API	Native C/C++, C#/VB.NET, DirectShow, Twain and Labview
Recording System	Still Picture and Movie
Cooling System	Natural
Maximum Connected Devices	<=3
Operating Environment	
Operating Temperature(in Centidegree)	-10~ 50
Storage Temperature(in Centidegree)	-20~ 60
Operating Humidity	30~80%RH
Storage Humidity	10~60%RH
Power Supply	USB Charger, Not Recommend PC USB Port
Software Environment	
Operating System	Microsoft® Windows® XP / Vista / 7 / 8 / 10 (32 & 64 bit) IOS IPAD or iPhone, Android PAD and Phone
PC Requirements	CPU: Equal to Intel Core2 2.8GHz or Higher Memory:2GB or More WiFi Adapter with DHCP Enabled Display:17" or Larger CD-ROM
PAD	IPAD or PAD with Android System
Mobile Phone	IPhone or Smart Phone with Android System

DIMENSION

The LC-5 1080P C-mount WiFi CMOS Camera body, made from tough, zinc alloy, ensures a heavy duty, workhorse solution. The camera is designed with a high quality IR-CUT to protect the camera sensor. No moving parts included. This design ensures a rugged, robust solution with an increased lifespan when compared to other industrial camera solutions.





LABOMED, INC.

PACKING INFORMATION



Standard Camera Packing List

- A Carton L:52cm W:32cm H:33cm (20pcs, 11.4~14Kg/ carton), not shown in the photo
- B Gift box L:15cm W:15cm H:10cm (0.57~0.58Kg/ box)
- C USB2.0 C-mount CMOS camera
- D High-speed USB2.0 A male to B male gold-plated connectors cable /2.0m(for PC power only) or with USB charger
- E CD (Driver & utilities software, Ø12cm)



LABOMED, INC.

Optional Accessory

- F Adjustable lens adapter
C-mount to Dia.23.2mm eyepiece tube
(Please choose 1 of them for your microscope)
- G Fixed lens Adapter
C-mount to Dia.23.2mm eyepiece Tube
(Please choose 1 of them for your microscope)

Note: For F and G optional items, please specify your camera type(C-mount, microscope camera), Labomed engineer will help you to determine the right microscope or telescope camera adapter for your application.

- H 108015(Dia.23.2mm to 30.0mm Ring)/Adapter rings for 30mm eyepiece tube
- I 108016(Dia.23.2mm to 30.5mm Ring)/ Adapter rings for 30.5mm eyepiece tube
- J 108017(Dia.23.2mm to 31.75mm Ring)/ Adapter rings for 31.75mm eyepiece tube
- K Calibration kit
106011/TS-M1(X=0.01mm/100Div.);
106012/TS-M2(X,Y=0.01mm/100Div.);
106013/TS-M7(X=0.01mm/100Div., 0.10mm/100Div.)